



Nothing happens unless first we dream...

- Carl Sandburg

After a decade of planning, East End Hospice's long-held dream of opening an inpatient facility will become a reality in October 2015, when the *Kanas Center for Hospice Care* will open its doors. For the first time, hospice patients who cannot be cared for at home will have the option of spending their final days in a homelike environment where compassionate care will ensure their comfort and dignity.

Designed by renowned architect Roger Ferris, the *Kanas Center* will be a campus of gabled buildings connected by sky-lit walkways and panoramic windows that look out upon six acres of conservation easement along the banks of the Aspatuck River. The building will be surrounded by gardens and walking paths, with benches for rest and reflection. With its integration of light and form, and the use of materials that reflect the residential character of its Quogue neighborhood, the entire design is intended to uplift and inspire all who enter.

"... It was a moment of tremendous emotion and pride!"

A generous donation from John and Elaine Kanas made it possible to break ground in July 2014, and construction has continued steadily throughout the fall and winter, despite bitter temperatures and record snowfalls. By February, the steel



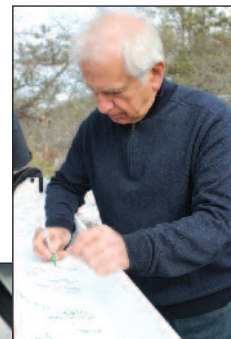
Priscilla Ruffin, John Kanas, John Kanas, Jr. and Elaine Kanas at EEH's Topping Off Ceremony.



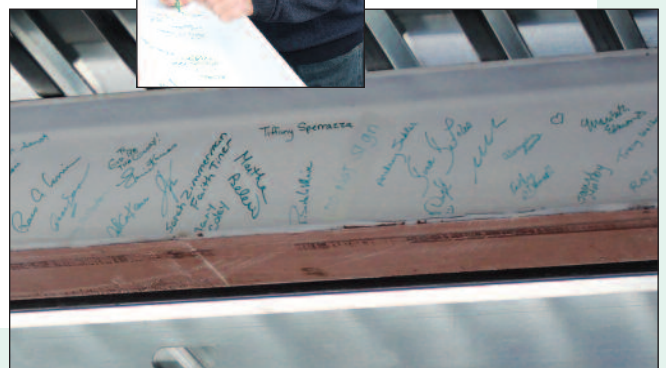
frame had been erected—with the exception of one final beam. In a nod to an ancient tradition among builders, EEH had its own “Topping Off” ceremony, during which staff and supporters were invited to sign that special beam, which was then hoisted into position bearing the flag of East End Hospice. It was a moment of tremendous emotion and pride!

With the spring came the framing of the rooms, and in the coming days the roof will be sealed, and plumbing and electricity will be installed. Then, as crews from multiple trades work on the infrastructure, the process of completing the “finishes” will get underway. Every design detail—flooring, lighting,

continued



John Kanas signs the beam.





December 2014



April 2015

color palate and furniture selection—has been chosen to maximize light, minimize sound and provide an atmosphere that soothes the soul and pleases the eye. And features such as built-in oxygen, a special bathing spa, beds that can be wheeled out onto the decks and even a blanket-warmer, are just some of the elements planned to provide comfort for our patients.



Fall 2015

Meanwhile, EEH's clinical advisory team is busy at work defining the policies and procedures that will govern the day-to-day functions at the *Kanas Center*, where skilled nurses will care for patients around the clock, seven days a week, under the supervision of our long-time Medical Director,

Dr. Louis Avvento.

Helping patients and families cope with both the physical and emotional toll at the end of life is another essential component of EEH's care, and support from social workers and pastoral care will be available onsite. Also, as with our at-home services, our specially-trained volunteers will play an important role in providing comfort, respite and a helping hand to patients and their loved ones at the *Kanas Center*.



We are so grateful for the outpouring of support that has made the development of East End Hospice's *Kanas Center for Hospice Care* possible. There is still a need for gifts— please give as generously as you are able. Every gift is welcome, and there are still opportunities to donate at "Founder" levels, which offer naming opportunities. We are happy to offer tours of the site, where potential donors can truly experience the open and spacious design of the building.

With your help, we will soon be able to say that— together— we made a dream come true. On behalf of the Board of Directors, the staff, and the countless patients and families who will be welcomed at the *Kanas Center for Hospice Care* at their time of greatest need — thank you, thank you, thank you!

For more information, please call Capital Campaign Coordinator Maribeth Edmonds at 631.288.7080 or e-mail at medmonds@eeh.org.



East End Hospice
PO Box 1048, Westhampton Beach, NY 11978 • 631-288-8400 • www.eeh.org