



EAST END
HOSPICE

EAST END HOSPICE NEWS

NEWSLETTER OF LONG ISLAND'S EAST END HOSPICE • VOL. 1, NO. 1, FALL 1991

Certification – Our Goal Well Met

The generous efforts of so many wonderful people came to fruition on September 3, 1991, when East End Hope for Hospice became *East End Hospice* and was granted certification by the State of New York to provide a full range of hospice services to the terminally ill and their families, on Long Island's North and South forks.

Can it really be almost five years ago that about 75 of us gathered in the Westhampton Presbyterian Church to hear speakers from the Bradford Hospice tell us what a hospice was all about? It seems like yesterday, until I begin to think of the hundreds of hours so many helpful people have given – and the marvelous support we have had from the communities – to make our dream become a reality. Your outpouring of help for hospice has been extraordinary.

We thank you all for everything you have done, for without your love and generosity, in both time and money, this could never have been accomplished. A full-fledged hospice and all it can provide for the people of the East End has always been our goal, and with your help we made it!

Here's to our future, yours and ours, that East End Hospice will grow to be a loving answer to those in need. With your continued help, the result can only be the best.

Dorothy P. Savage
Chairperson, Board of Directors



Two Summer Celebrations

The "Cocktails By the Bay '91" Benefit Committee, representatives shown here below, ably planned this fine summer fundraiser held at Sandacres in Quogue, June 28. Marcia Bradley and Susan Leness served as Co-Chairs for the event, with Honorary Chairperson Susan McAllister. Nearly 600 guests enjoyed our Abracadabra magical evening, with dancing, delicious food, and fine wines the generous gift of Long Island restaurants, caterers, and vineyards. . . . In the very next month the "Cocktails By the Sea '91" Benefit Committee (see photograph above) arranged the next gala for July 28 at the Bridgehampton Tennis and Surf Club, with John Morrison serving as Chairman and Barbara Hattrick and Jay Paul as Co-Chairs. More than 200 guests attended, enjoying the fine victuals, fabulous view, and irresistible prize drawings. The yield of both delightful and rewarding events? Essential funds for vital East End Hospice programs in the coming seasons.



AIDS Care And Our Hospice

We have a crisis in our community that demands our immediate attention – AIDS. The impact on our society from one tiny bit of matter boggles the mind; one microscopic structure is changing our world forever.

Countless numbers of creative and talented people have died from AIDS, their further

continued

From the Director . . .

A "Real" Hospice

Hospice is finally here! Hospice, health care designed to support and care for terminally ill patients and their loved ones. Hospice, defined by words such as comfort, dignity, and compassion. Now we have hospice here in our community. A "real" hospice. One that is certified by the State of New York, and licensed to provide the full team of professionals and volunteers we need to care for a dying patient and the loved ones.

None of us likes to think about the possibility of needing hospice care for someone we love, or for ourselves. But when that time comes, with hospice a dying patient's needs will be met with compassion. With hospice care, a dying patient is able to leave this world with dignity and in peace.

On September 4, 1991, the East End Hospice Interdisciplinary Team admitted our first patient. She is a brave and dear lady who has chosen to live her final days in the peace and comfort of her own home.

She will be cared for by her family, and by the staff and volunteers from East End Hospice. The hospice team will be there to meet her needs. If she needs physical care, hospice will send a team of professionals - a nurse, home health aide, or a therapist - all under the direction of her personal physician. If her need is for emotional support, hospice will send a social worker or counselor to help her and her family to cope with her illness and death. If she is feeling alone and isolated, hospice can ask a volunteer to visit to ease her loneliness. If she needs spiritual guidance, hospice will send our pastoral care director to help her make peace with her God.

Hospice cares for the whole person. It extends beyond the physical and into



The Guys and Dolls Brunch/Matinee, a May 5 fundraiser for East End Hospice, was held at the Annex Restaurant, Wainscott, with the Community Theater Company presentation at the John Drew Theater, Easthampton. Present and clearly enjoying the day, from left: John Morrison, Florence and Jerry Grey, Arthur and Ruth Steel, David Porter.

AIDS Care *continued*

contributions to society lost forever. Many more are sick and disabled from the effects of living with the virus. All of us have had, or soon will have, our lives touched in some way by the AIDS virus. We all must do our part to respond during this time of turmoil by, at the very least, reaching out to one another.

The AIDS crisis has thrown health care systems into chaos. If a system is to survive chaos it must have the ability to adapt and change. Most health care systems are evolving in an attempt to respond to the AIDS crisis, and East End Hospice is no exception.

AIDS is an unpredictable

psychological, emotional, and spiritual care. With hospice, patients, families, friends, and loved ones are treated with dignity and respect.

We are grateful to all of you who have helped us over these past few years. Please share our joy. Together we have accomplished a great milestone - East End Hospice - a certified hospice program for the people of Long Island's East End. Now, our work can begin.

*Priscilla A. Ruffin
Executive Director*

disease with many phases. Right now there is no cure for it; patients with AIDS will reach a terminal phase of their illness. When a person with AIDS reaches the terminal stage it is time for hospice, for this person is no different in need from someone who is terminally ill from the effects of a malignant tumor or heart disease.

As our first East End Hospice newsletter goes to press, we begin our third week of certified operations. During the past three weeks we have received requests for help from three people with AIDS. We have responded to each request. Currently we are providing care, teaching, and support to three families and friends who are in crisis because of AIDS.

East End Hospice is beginning a new phase of operation. We are no longer an all-volunteer organization, but now have a strong group of skilled professionals who, along with the volunteers, provide symptom control and support for all dying patients, including those with AIDS.

Over the next year East End Hospice will grow and change in many ways. With your continued support we will fulfill our mission to provide hospice care and comfort to all who turn to us in their time of crisis.



At the May 1 Gardiner's Bay Country Club Benefit Golf Tournament: Wayne Swiatocha, Bill Masterson, Chrmn. George Dillon, Dick Petry.

Save These Dates For Fall!

• *The Judy Carmichael Concert* – Saturday, November 23, 8:00 pm. Renowned pianist Judy Carmichael will perform boogie, stride and swing at the Southampton High School Auditorium. Admission is \$10, with a senior citizen discount and no charge for students. Reservations are not required, and refreshments will be served.

• *The Tree of Lights Celebration* – Sunday, December 8, 4:30 pm. Light a light on our tree in memory of someone you love. Come to East End Hospice, 472 Montauk Highway in East Quogue. Refreshments will be served.

Letters From Our Friends

"Many thanks to all of you at hospice for making my sister's illness and death more comfortable and dignified. God Bless you all."

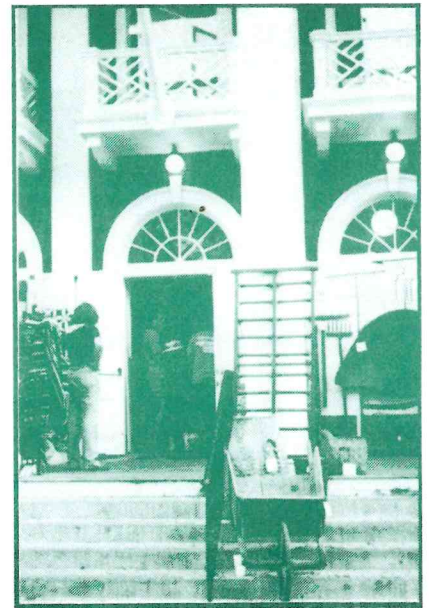
"Your positive and loving attitude toward people with AIDS serves as a model of caring and compassion that I can only hope other groups that serve people with AIDS will follow."

"I want to thank you for the extraordinary uplifting and practical support and love you gave to my friend. I cannot tell you how grateful I am."

"How do I convey to you how much it meant to me to have you arrive at the time when I needed support."

"Words can hardly express the wonderful feelings our family has for you and all that you did for Mom. She had the best of care when you were around. Not only did you care for her, but you offered so much to us. Your listening, advising, and soothing abilities are superb."

"Thank you for sending the volunteers to us. They are very special people. We are lucky to have hospice here on the East End."



Antiques were the enticement August 21, at the gala East End Hospice Benefit Preview of the 25th Annual Hamptons Antiques Festival, Bridgehampton Community House, as generously arranged by Jean Sinenberg of Georgica Creek Antiques in Wainscott.

Thanks and Wishes

We thank . . .

. . . Elsie Collins; Cadet Girl Scout Troop 1001 from East Hampton, for serving as ushers at the Judy Carmichael Concert; Carel de Leeuw of Westhampton Greenery; East End Hospice friends who spent meticulous hours needlepointing our Flowers and Ivy Rug; Fine Arts Division of Long Island University, Southampton Campus, for donating the piano for the Judy Carmichael Concert; Beatrice Greenbaum; William Hattrick; Interact Club of Rotary, for help in labeling and collating our mailings; Legend Furniture; Bruce Newman; Jean Sinenberg of Georgica Creek Antiques; Elizabeth A. Smith; Westhampton Garden Club; Westhampton Rotary Club; Dr. Richard E. Winter.

We wish for . . .

An office water cooler . . . a Pitney Bowes postage meter . . . a 35 mm camera for special events . . . a cellular phone.

East End Hospice Mission Statement

East End Hospice provides care and comfort for terminally ill patients and their families and loved ones living in our communities on the North and South forks of Long Island. Health care professionals and volunteers offer pain and symptom control as well as social, emotional, and spiritual support to patients and their loved ones in the comfort of their own home. East End Hospice also seeks to promote awareness of the benefits of hospice care in our communities through educational and informational presentations to civic, fraternal, and religious groups, professional organizations, and educational institutions.

You Are Invited . . .

. . . To become an East End Hospice Donor by making a tax-deductible gift -

Program Contribution \$ _____

Donation in Memory of _____

Donation in Celebration of _____

My name _____

Address _____

City, State, Zip _____

Telephone _____

Acknowledgement to be sent to:

Name _____

Address _____

City, State, Zip _____

Enclosed is my check for \$ _____. All gifts are tax deductible to the full extent allowable by law. Gifts in any amount are welcome. Checks may be made payable to East End Hospice, Inc., Box 1530, East Quogue, New York 11942.



Gracious thanks are due Carel de Leeuw of Westhampton Greenery, for special floral gifts to so many East End Hospice events this year.

East End Hospice News is published quarterly by East End Hospice, a non-profit organization certified by New York State to provide care for the terminally ill, their families and loved ones in eastern Suffolk County. Inquiries about hospice care and volunteering are welcome: East End Hospice, 472 Montauk Hwy, P.O. Box 1530, East Quogue, NY 11942-1530. Telephone (516) 653-4200.

East End Hospice Board of Directors

Dorothy P. Savage, *Chairperson*
W. Michael Pitcher, *President*
Michael J. Cruise,
Executive Vice President
E. L. Childs, *Treasurer*
Dorothy V. Evans, *Secretary*
Byron Chandler
Anne Finch Cox

East End Hospice Information

*"Caring for the terminally ill,
their families and loved ones."*

- For patient or family services - call the Hospice Director of Patient Services, 653-4200.
- To become an East End Hospice Volunteer - call the Volunteer Coordinator, 653-4200.
- For the East End Hospice Speakers Bureau - call the Hospice Executive Director, 653-4200.
- East End Hospice is a not-for-profit corporation serving the Eastern Suffolk County townships of Brookhaven, Riverhead, Southold, Shelter Island, Southampton, and East Hampton.

Elizabeth Failing
Barbara Hattrick
Norman L. Leavitt
Susan H. Leness
Kathleen Miggins McVann
John C. Morrison
E. David Porter
Violet Romeril
Jeanne P. Waller
Priscilla A. Ruffin, BSN,
Executive Director
Louis J. Avvento, MD,
Medical Director
Claudia M. Sawicki, BSN,
Director of Patient Services



East End Hospice News is partially funded by a generous gift from PIP Printing, Riverhead

East End Hospice
472 Montauk Highway
Post Office Box 1530
East Quogue, NY 11942-1530

Address correction requested

Nonprofit Organization
US POSTAGE
PAID
Permit No. 12
East Quogue, NY 11942

